

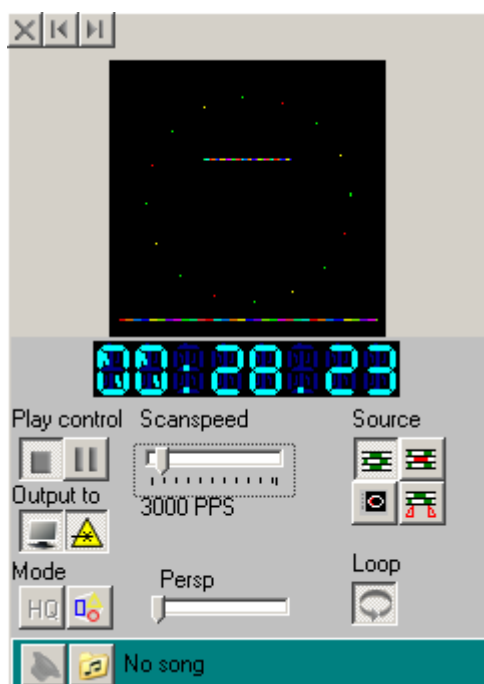
Laser Controller Software Installation Guide

Contents

- 1 LASER CONTROLLER SOFTWARE INTRODUCTION3
- 2 LASER CONTROLLER SOFTWARE INSTALLATION.....4
- 3 LASER CONTROLLER DRIVER INSTALLATION7
- 4 RUNNING LASER CONTROLLER SOFTWARE 11
- 5 LASER CONTROLLER SOFTWARE CONFIGURATION..... 12

1 Laser Controller Software Introduction

The laser controller software and shows are in the attached disk, please install the software and use the software accord to this guide.

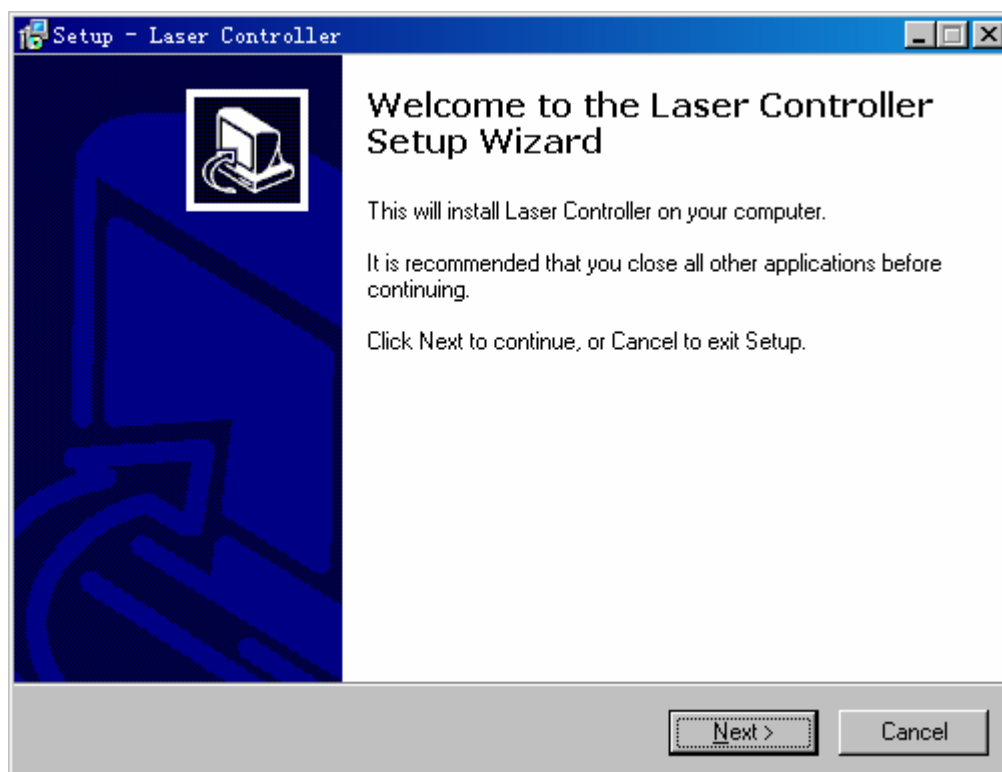


Cuation:

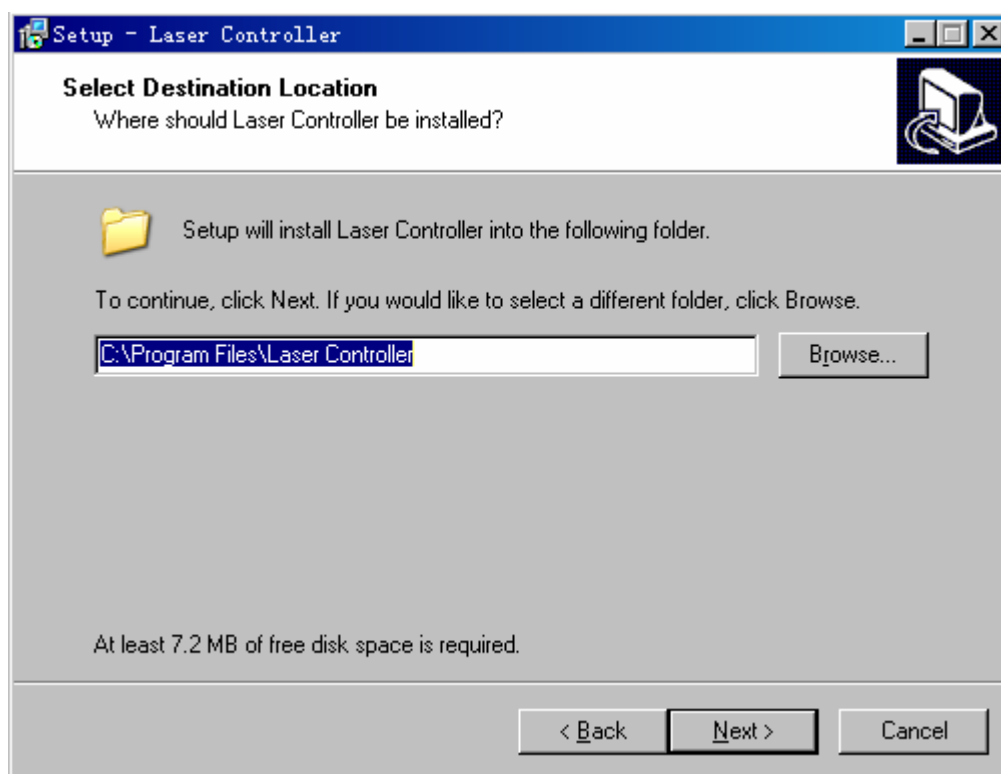
You should assure that the Scanspeed (as above figure showing) is under the limitation of laser light before connecting the laser controller with your laser light. Please refer to the laser light user manual.

2 Laser Controller Software Installation

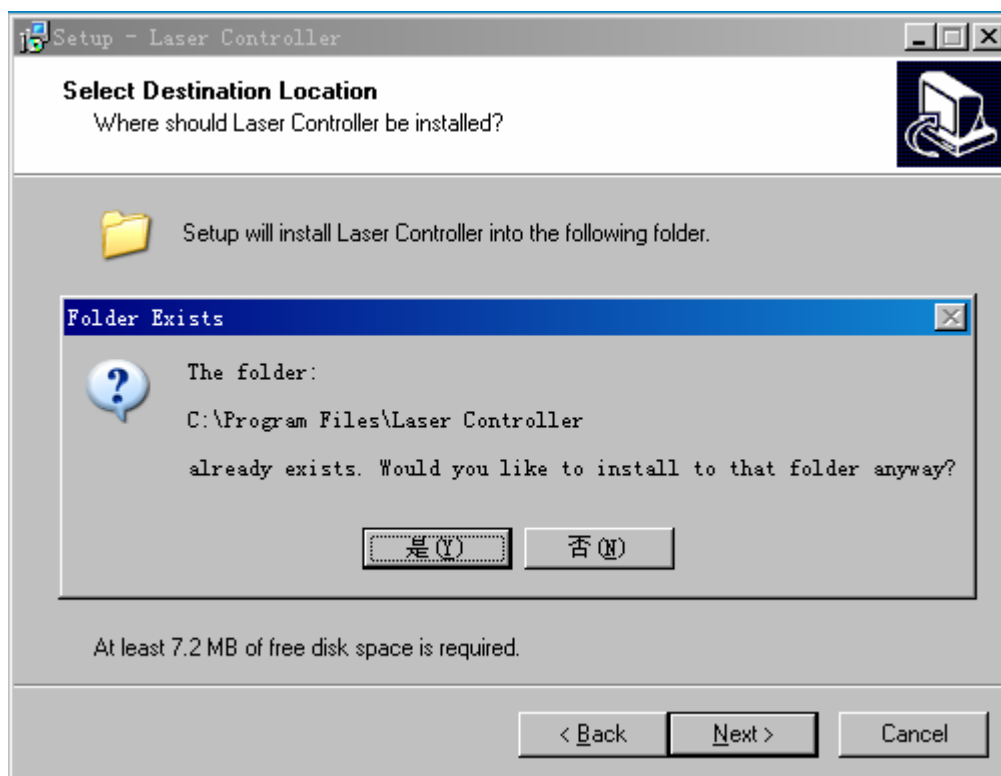
- 1) Double click setup.exe in the disk, starting to install Laser Controller software:



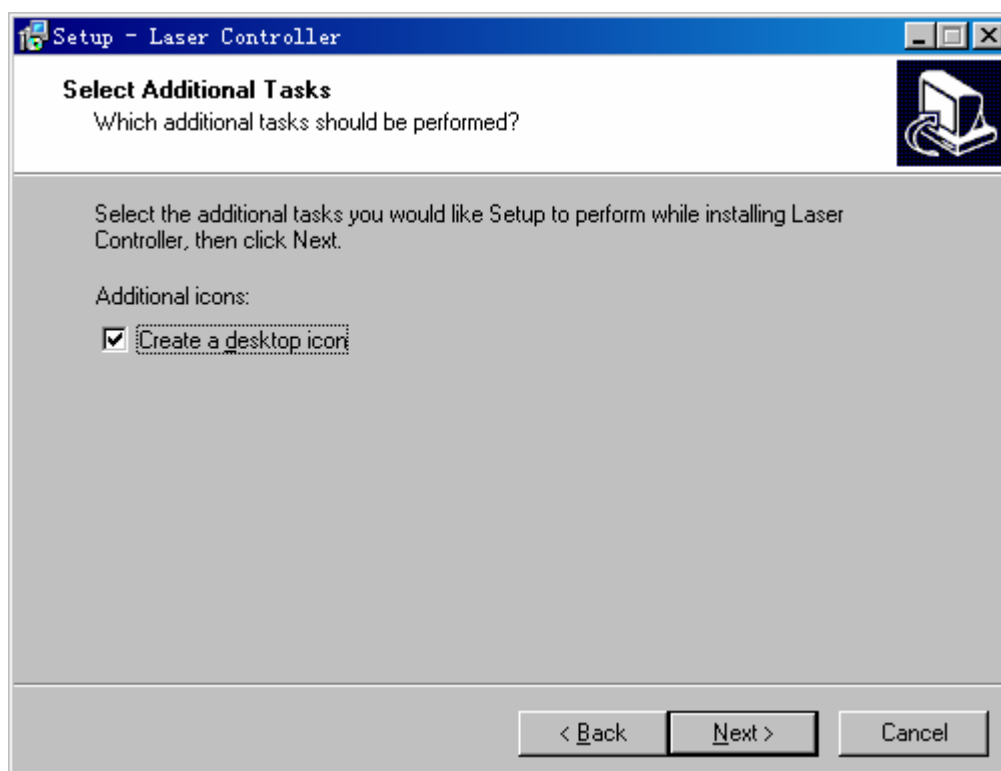
- 2) Click "Next" , selecting directory that you want to install:



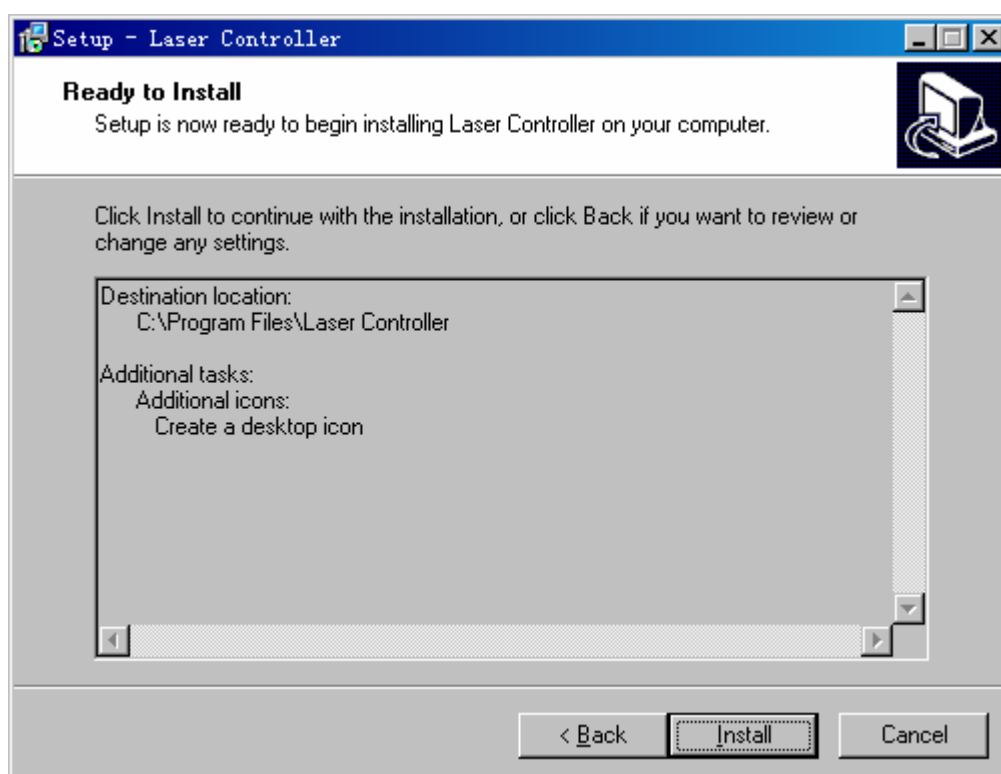
- 3) Click “Next” , if the directory not exist, the installation procedure will prompt you to create it:



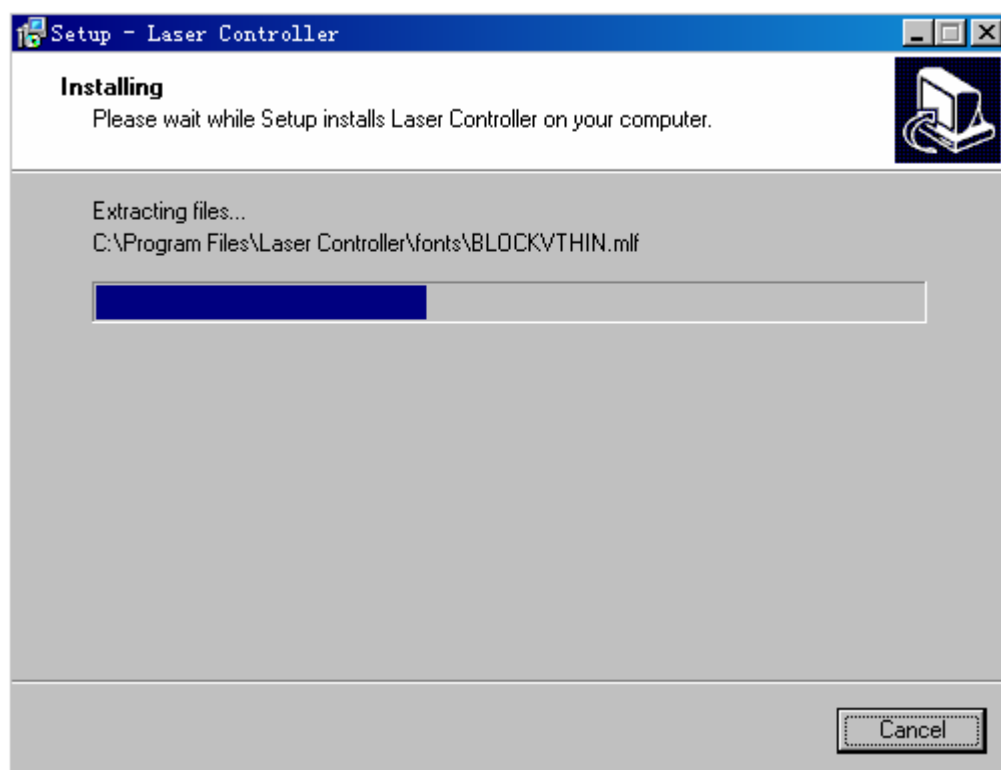
- 4) Click “Next” :



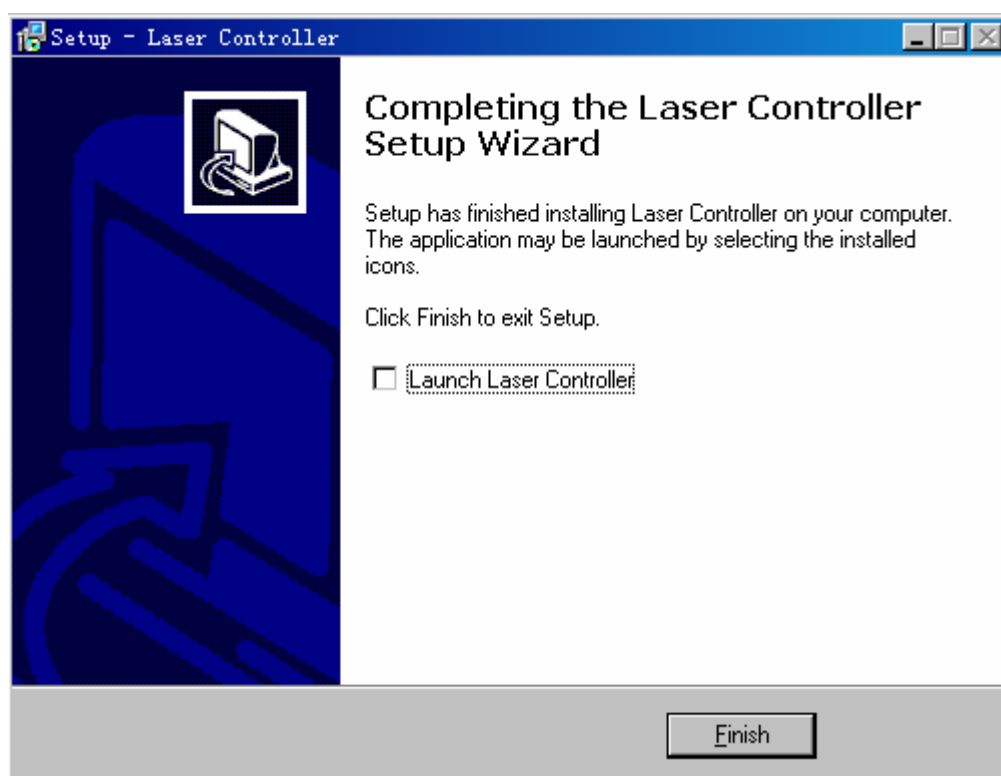
- 5) Click “Next” :



- 6) Click “Install” , starting to install the software:



- 7) Click “Finish” , finishing the installation:



3 Laser Controller Driver Installation

The system will prompt you to install the driver when you connect the laser controller with computer at the first time, please refer to the following steps:

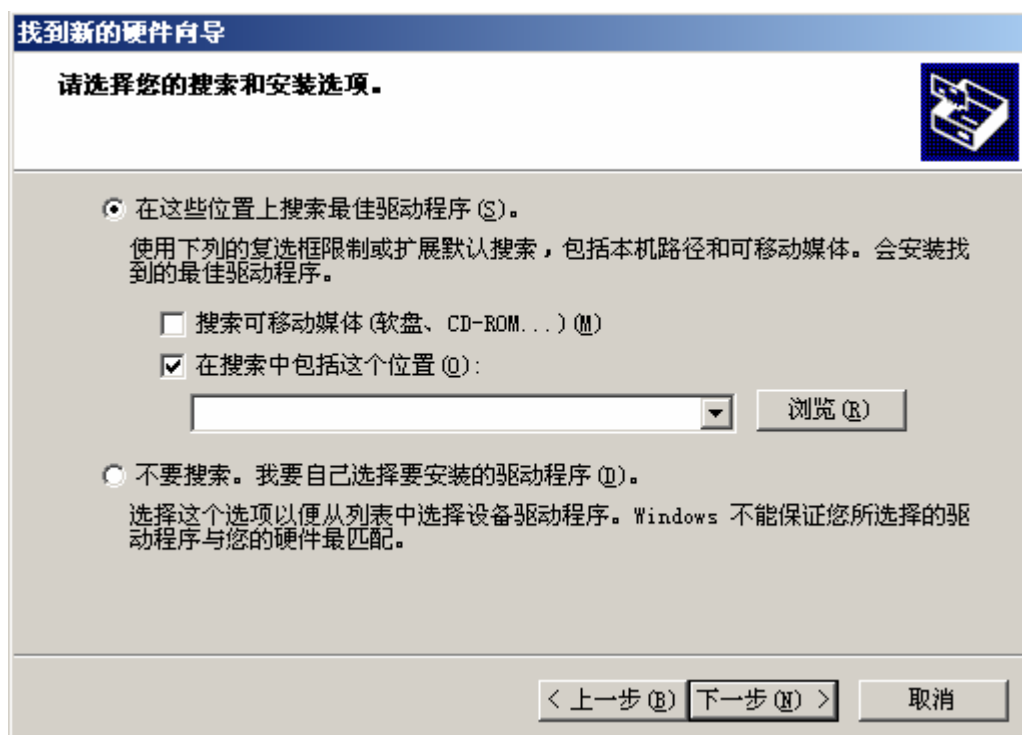
- 1) Select the 3rd radio(No, temporary not), click next:



- 2) Select the 2nd radio (Setup from the list or the specified location), click next:



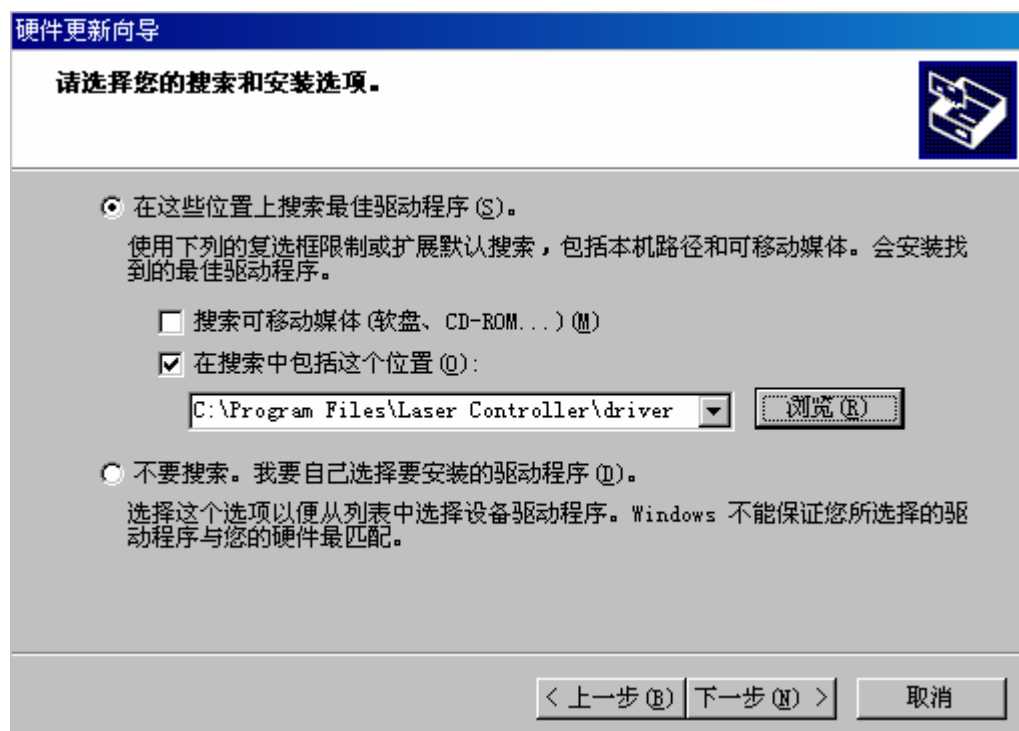
- 3) Select “Include the location to search” checkbox, click next:



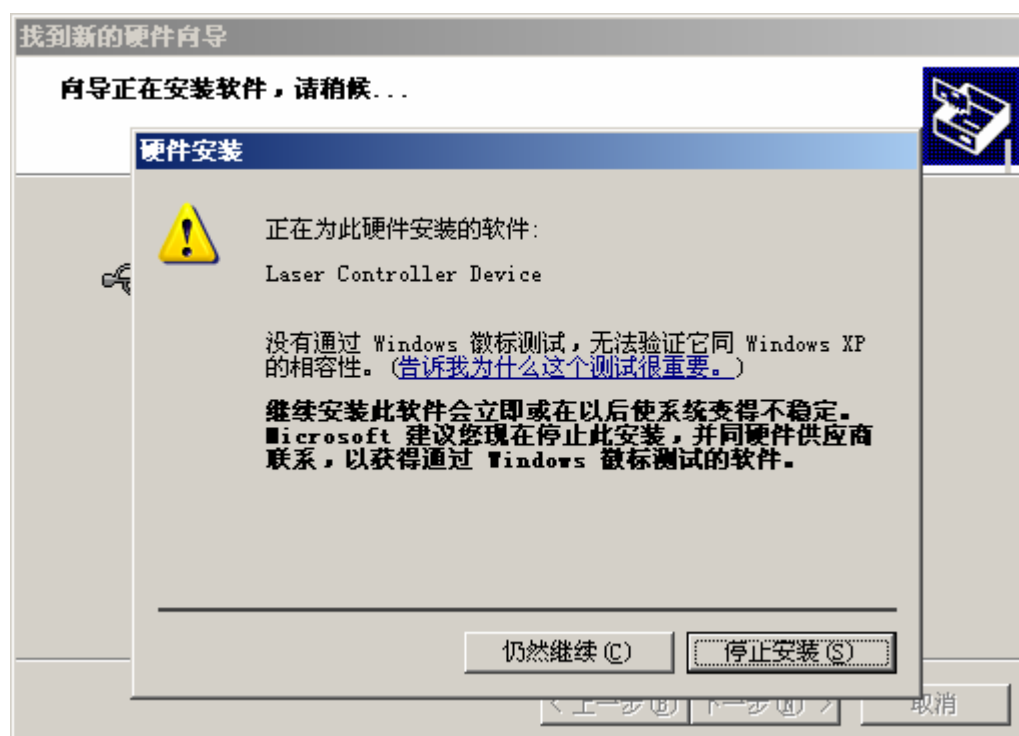
- 4) Click “Browse” to select the directory that you the driver locate in (The default directory: C:\Laser Controller\driver), click “OK” :



- 5) Click “Next” after select the driver directory:



- 6) The following window will display:



- 7) Click "Continue to Install" :



- 8) Click “Finish” to finish the installation:



4 Running Laser Controller Software

Caution:

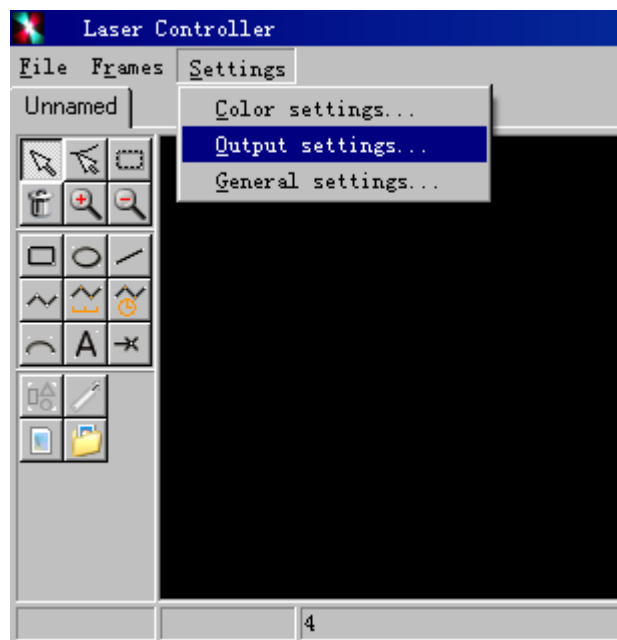
You should assure that the Scanspeed is under the limitation of laser light before connecting the laser controller with your laser light. Please refer to the laser light user manual.

Please assure that the laser controller box is connected with computer correctly before start the software.

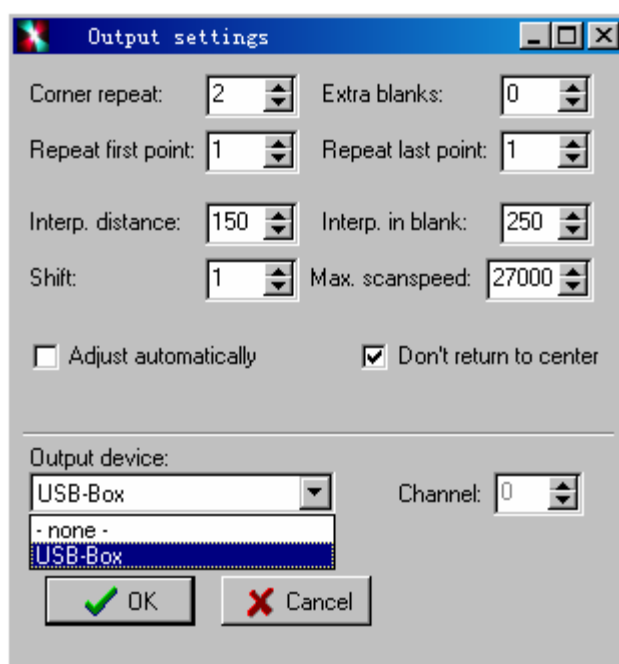
5 Laser Controller Software Configuration

You need to configure the software before use the software in order to select the laser controller box as your output device. Please refer to the following steps:

- 1) Select menu Settings→Output settings... to configure:

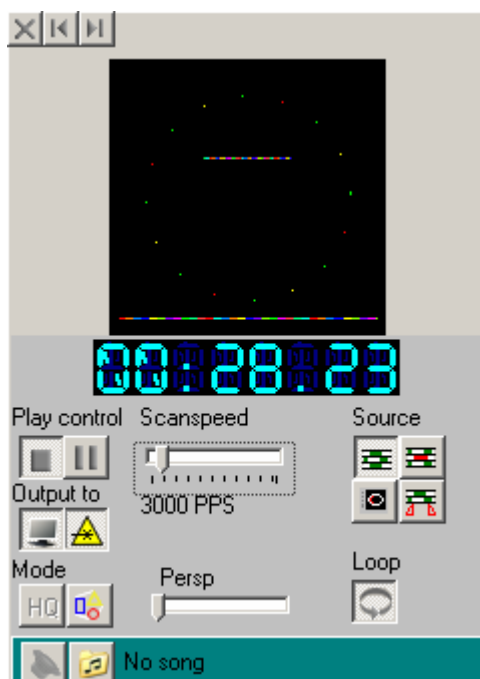


- 2) The “Output settings...” interface is like this:



Select “USB-Box” item form “Output device” list, then click “OK” .

Now you can select a show to play, then click “output to laser” to output signal to your laser light.



Cuation:

You should assure that the Scanspeed (as above figure showing) is under the limitation of laser light before connecting the laser controller with your laser light. Please refer to the laser light user manual.
